

Analysis and design of bolted and welded joints in steel frames and in tubular structures according to Eurocode 3

Steel Design 5

J.W.B. Stark

J. Wardenier

# Joints

# Colophon

text prof.ir. J.W.B. Stark and prof.dr.ir. J. Wardenier  
editing ir. C.H. van Eldik / Bouwen met Staal  
graphic design Karel Ley / Fig.84-Reclamestudio

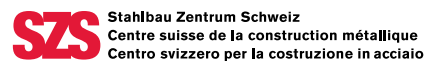
published by Bouwen met Staal  
ISBN 978-90-75146-08-0

The publication of this textbook has been made possible by:

|                          |  |
|--------------------------|--|
| Bauforumstahl            | <a href="http://www.bauforumstahl.de">www.bauforumstahl.de</a>                   |
| Bouwen met Staal         | <a href="http://www.bouwenmetstaal.nl">www.bouwenmetstaal.nl</a>                 |
| Infosteel                | <a href="http://www.infosteel.be">www.infosteel.be</a>                           |
| Stahlbau Zentrum Schweiz | <a href="http://www.szs.ch">www.szs.ch</a>                                       |
| Tata Steel               | <a href="http://www.tatasteelconstruction.com">www.tatasteelconstruction.com</a> |
| World Steel Association  | <a href="http://www.constructsteel.org">www.constructsteel.org</a>               |



**TATA STEEL**



**worldsteel**  
ASSOCIATION

© **Bouwen met Staal 2023**

All rights reserved. No part of this publication may be reproduced, stored in an automated database and/or made public – in any form or by any means, electronic, mechanical, photocopying, recording or in any other way – without prior written permission from the publisher. The utmost care was taken in the preparation of this publication. Nevertheless, any errors and imperfections can not be ruled out. The publisher excludes – also for the benefit of all those who have participated in this publication – any liability for direct and indirect damage, caused by or in connection with the application of this publication.

This textbook was originally published in 2014 by Bouwen met Staal in Dutch as *Knopen* by the same authors. The English translation has been prepared by ir. H. El Bamby, dr. F. Kavoura and prof.dr. M. Veljkovic (all Delft University of Technology) and checked by dr. G. Couchman (The Steel Construction Institute).

The text is based on the (English) EN version of the Eurocodes using default and/or recommended values. Where a country can make a national choice – or when non-contradictory complementary information may be used – this is indicated by the following symbol: **NA**. Separate annexes contain the national choices for Belgium, Luxembourg, The Netherlands and Switzerland. These annexes – as well as any errata, corrections and additions to this textbook – can be downloaded free of charge from the websites of the (national) organisations.

# Illustrations

All unnamed photographs and all drawings are from the archive of Bouwen met Staal.

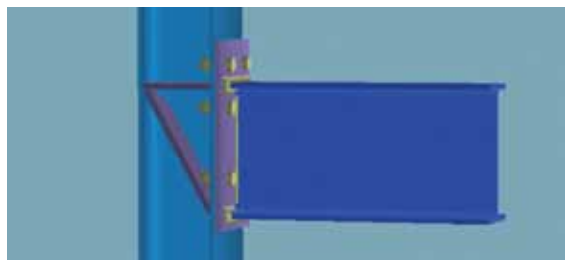
B = bottom, T = top.

|  |   |   |                    |
|--|---|---|--------------------|
| P. van Bogaert                           | 5.38                                      | Beeldarchief Rijkswaterstaat / J. van Houdt                         |                    |
| Canadian Institute of Steel Construction | 4.1T                                      | ( <a href="https://beeldbank.rws.nl">https://beeldbank.rws.nl</a> ) | 5.1B               |
| I.J.J. Broekhoven                        | 1.2, p. 2-1, 2.1, 3.3, p. 4-1, 4.31, 4.48 | Tom de Rooij Vakfotografie  | 3.54               |
| TA Craft Photography                     | 1.1                                       | Zhou Ruogu Architecture Photography                                 | p. 5-1             |
| C.H. van Eldik                           | 1.3, p. 3-1, 5.50                         | Staalbouw Barneveld   | 4.7                |
| Joe Gough                                | cover, p. 1-1                             | J.W.B. Stark  | 4.1B               |
| HSM Offshore                             | 5.1T                                      | Stelco  | 5.3                |
| Infosteel                                | 3.2                                       | Tata Steel Europe   | 5.4                |
| Kumamoto University / Y. Makino          | 5.14                                      | TU Delft / Faculteit Civiele Techniek en Geowetenschappen           | 4.27, 5.13c, 5.13d |

# Content

|          |   |             |
|----------|---|-------------|
| <b>1</b> | <b>Joint characteristics in frames</b>                  | <b>1-2</b>  |
| 1.1      | <b>Classification of joints</b>                         | <b>1-3</b>  |
| 1.1.1    | Structural modelling                                    | 1-3         |
| 1.1.2    | Classification based on stiffness                       | 1-6         |
| 1.1.3    | Classification based on strength                        | 1-7         |
| 1.2      | <b>Modelling of the joint characteristics</b>           | <b>1-8</b>  |
| 1.2.1    | Joint modelling   | 1-8         |
| 1.2.2    | Component method  | 1-12        |
| 1.3      | <b>Resistance of the joint</b>                          | <b>1-14</b> |
| 1.3.1    | Tension resistance                                      | 1-14        |
| 1.3.2    | Shear resistance  | 1-28        |
| 1.3.3    | Compression resistance                                  | 1-29        |
| 1.3.4    | Moment resistance                                       | 1-33        |
| 1.4      | <b>Joint stiffness</b>                                  | <b>1-35</b> |
| 1.4.1    | Rotational stiffness                                    | 1-35        |
| 1.4.2    | Moment/rotation diagram                                 | 1-41        |
| 1.5      | <b>Requirements for rotation capacity and stiffness</b> | <b>1-42</b> |
| 1.5.1    | Plastic analysis  | 1-44        |
| 1.5.2    | Elastic analysis  | 1-51        |
| 1.6      | <b>Literature</b>                                       | <b>1-56</b> |
| <br>     |   |             |
| <b>2</b> | <b>Pinned joints in frames</b>                          | <b>2-2</b>  |
| 2.1      | <b>What are pinned joints?</b>                          | <b>2-2</b>  |
| 2.2      | <b>Design principles</b>                                | <b>2-6</b>  |
| 2.2.1    | Eccentricities  | 2-6         |
| 2.2.2    | Reduced cross-section                                   | 2-8         |
| 2.2.3    | Distribution of bolt forces                             | 2-9         |
| 2.2.4    | Bearing resistance for an inclined force                | 2-10        |
| 2.2.5    | Joint as restraint                                      | 2-10        |
| 2.2.6    | Beam-to-beam joint with a flange plate                  | 2-12        |
| 2.2.7    | Local buckling of a fin plate or an angle               | 2-13        |
| 2.2.8    | Combined bending and shear                              | 2-14        |
| 2.2.9    | Rotation capacity                                       | 2-15        |
| 2.3      | <b>Design of pinned beam-to-column joints</b>           | <b>2-18</b> |
| 2.3.1    | Fin plate joint   | 2-18        |
| 2.3.2    | Joint with a partial depth end-plate                    | 2-24        |
| 2.3.3    | Joint with angles                                       | 2-28        |
| 2.4      | <b>Literature</b>                                       | <b>2-36</b> |





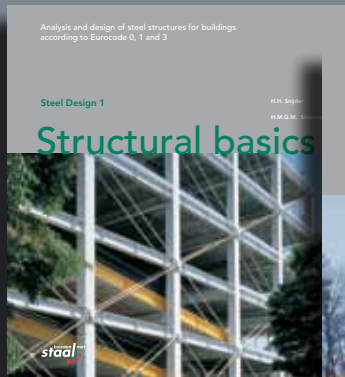
|          |  |            |
|----------|--|------------|
| <b>3</b> | <b>Moment-resistant joints in frames</b>                       | <b>3-2</b> |
| 3.1      | What are moment-resistant joints?                              | 3-2        |
| 3.2      | Preliminary design   | 3-5        |
| 3.2.1    | Rotational stiffness   | 3-5        |
| 3.2.2    | Moment resistance  | 3-9        |
| 3.2.3    | Transfer of design information                                 | 3-14       |
| 3.3      | Detailed design  | 3-15       |
| 3.3.1    | Component-oriented design                                      | 3-16       |
| 3.3.2    | Design approach  | 3-21       |
| 3.4      | Further aspects of designing joints with end-plates            | 3-24       |
| 3.4.1    | Strengthening and stiffening of semi-continuous joints         | 3-25       |
| 3.4.2    | Design procedure for braced frames with semi-continuous joints | 3-31       |
| 3.4.3    | Design procedure for unbraced frames                           | 3-34       |
| 3.5      | Design of welded moment-resistant joints                       | 3-40       |
| 3.5.1    | Tension resistance   | 3-41       |
| 3.5.2    | Shear resistance   | 3-45       |
| 3.5.3    | Compression resistance   | 3-45       |
| 3.5.4    | Moment resistance  | 3-48       |
| 3.5.5    | Strengthening and stiffening                                   | 3-48       |
| 3.5.6    | Rotational stiffness   | 3-50       |
| 3.5.7    | Rotation capacity  | 3-50       |
| 3.6      | Literature   | 3-52       |
| <br>     |  |            |
| <b>4</b> | <b>Column bases</b>  | <b>4-2</b> |
| 4.1      | What are column bases?   | 4-3        |
| 4.2      | Resistance of base plates centrally loaded in compression      | 4-6        |
| 4.2.1    | Calculation models   | 4-6        |
| 4.2.2    | Design bearing resistance                                      | 4-8        |
| 4.3      | Resistance of eccentrically loaded base plates                 | 4-13       |
| 4.3.1    | Calculation models   | 4-13       |
| 4.3.2    | Design of the anchor bolts                                     | 4-17       |
| 4.4      | Shear resistance   | 4-22       |
| 4.5      | Stiffness  | 4-36       |
| 4.5.1    | Schematisation   | 4-36       |
| 4.5.2    | Rotational stiffness   | 4-37       |
| 4.5.3    | Stiffness classification                                       | 4-40       |

|            |                         |             |
|------------|-------------------------|-------------|
| <b>4.6</b> | <b>Fatigue</b>          | <b>4-41</b> |
| <b>4.7</b> | <b>Execution</b>        | <b>4-42</b> |
| 4.7.1      | Hole clearance          | 4-42        |
| 4.7.2      | Levelling of the column | 4-43        |
| <b>4.8</b> | <b>Literature</b>       | <b>4-44</b> |

|            |  |             |
|------------|--|-------------|
| <b>5</b>   | <b>Hollow section joints</b>   | <b>5-2</b>  |
| <b>5.1</b> | <b>Introduction to hollow sections</b>   | <b>5-2</b>  |
| <b>5.2</b> | <b>Characteristics of hollow section joints</b>                                      | <b>5-5</b>  |
| <b>5.3</b> | <b>Behaviour and analytical models for welded hollow section joints</b>              | <b>5-9</b>  |
| 5.3.1      | Joints of circular hollow sections   | 5-12        |
| 5.3.2      | Joints of square or rectangular hollow sections                                      | 5-17        |
| 5.3.3      | Joints between circular hollow section braces and a rectangular hollow section chord | 5-26        |
| 5.3.4      | Joints between hollow sections and an I-section                                      | 5-27        |
| 5.3.5      | Overlapped hollow section joints   | 5-28        |
| 5.3.6      | Joints between a plate and a hollow section  | 5-30        |
| 5.3.7      | Special hollow section joints  | 5-30        |
| 5.3.8      | Multiplanar hollow section joints  | 5-31        |
| 5.3.9      | Hollow section joints subjected to bending   | 5-33        |
| <b>5.4</b> | <b>Design of welded hollow section joints</b>  | <b>5-34</b> |
| 5.4.1      | Joint resistance   | 5-34        |
| 5.4.2      | Design curves  | 5-35        |
| 5.4.3      | Design guidelines  | 5-39        |
| <b>5.5</b> | <b>Bolted hollow section joints</b>  | <b>5-50</b> |
| <b>5.6</b> | <b>IIW, ISO and CIDECT guidelines</b>  | <b>5-51</b> |
| 5.6.1      | IIW 1989   | 5-51        |
| 5.6.2      | IIW 2012, CIDECT Design Guides 2008 and 2009 and ISO 14346                           | 5-51        |
| 5.6.3      | CIDECT Design Guides   | 5-52        |
| <b>5.7</b> | <b>Literature</b>  | <b>5-53</b> |



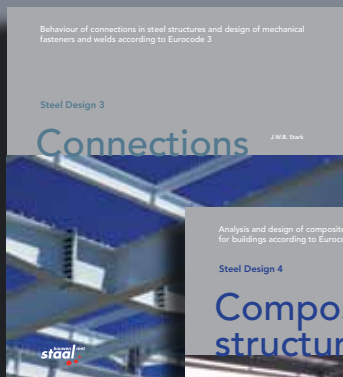
# Steel Design series



Steel Design 1



Steel Design 2



Steel Design 3



Steel Design 4



Steel Design 5

bouwen met  
**staal!**

**worldsteel**  
ASSOCIATION



Education and high quality textbooks are crucial to developing an interest in steel structures and their benefits for clients, architects and designers. However, despite the need to inspire the industry's next generation, many textbooks on steel structures are commissioned on a low budget, resulting in material that lacks imagination and tends to feature, at best, moderate illustrations. These textbooks are usually intended for high school and university level students, as well as designers who are not yet specialised in steel and steel construction. Therefore, it is vital that lecturers have access to up-to-date books that offer clear and concise explanations, while inspiring readers about the possibilities of steel through beautiful graphics and images. Steel Design is a set of English textbooks translated from the original Dutch that are based on the EN version of Eurocode with differences in nationally defined parameters included in an annex. These textbooks are intended for high-school and university level students. The content is applicable to designers who are not specialised in steel and steel construction. See <https://steeldesignbooks.eu> for more detailed information on these textbooks.

## World Steel Association

worldsteel has supported the development of study material related to steel in construction since 2018. This allows future architects and designers to take advantage of steel products and their features that support designs that meet the circular economy principles.

A separate opt-in programme has been developed called 'constructsteel.org' and is able to be joined by steel producers and construction industry related organisations upon application. This programme focusses on the construction market sector exclusively to promote steel and steel products. Please see [www.worldsteel.org](http://www.worldsteel.org) and [www.constructsteel.org](http://www.constructsteel.org) for further details about the steel industry and specifically the construction market.

